

Kabelske spojne čahure Cu, 1-10 kV prema DIN 46267, dio 1

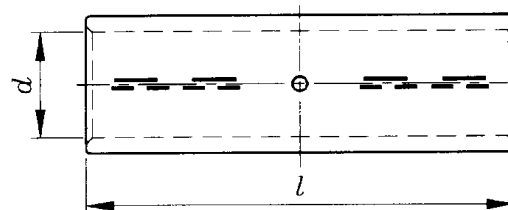
Non-tension compression joints Cu, 1-10 kV acc. to DIN 46267, sheet 1

za bakrenu užad prema DIN 48201
i bakrene vodiče prema
VDE 0295 i HRN N.CO.015

for copper conductors
acc. to DIN 48201
and copper cable conductors
acc. to VDE 0295 and HRN N.CO.015

Materijal: Bakar
Vanjska površina: galvanski
pokositrena

Material: Copper
Surface: tin-plated



Kataloški broj	Tip proizvoda	Nazivni presjek vodiča mm ²		Promjer vodiča mm VDE 0295 HRN N.CO.015	Dimenzije mm		Broj alata	Broj prešanja.		Težina ca. kg/100 kom.	Jedinično pakiranje kom.
		OJ	OV/SV		d	l		meh.	hydr.		
Cat.no.	Product type	Conductor cross section mm ²		Conductor diameter mm VDE 0295 HRN N.CO.015	Dimension mm		Die Code no.	Number of compressions		Weight appr. kg/100 pcs.	Packing Unit pcs.
		RE	RM/SM		d	l		mech.	hydr.		
MP 122 002	KCB-6	6	6	2,7-3-3	3,8	32	5	2-2	-	0,3	200
MP 122 004	KCB-10	10	10	3,5-4,2	4,5	32	6	2-2	-	0,3	200
MP 122 006	KCB-16	16	16	4,5-5,3	5,5	50	8	2-2	1-1	1,5	100
MP 122 008	KCB-25	-	25	5,6-6,6	7,0	50	10	2-2	1-1	1,8	100
MP 122 010	KCB-35	-	35	6,6-7,9	8,2	50	12	2-2	1-1	3,1	50
MP 122 012	KCB-50	-	50	7,7-9,1	10,0	56	14	3-3	1-1	4,3	50
MP 122 014	KCB-70	-	70	9,3-11,0	11,5	56	16	3-3	1-1	5,4	25
MP 122 016	KCB-95	-	95	11,0-12,9	13,5	70	18	4-4	2-2	8,7	25
MP 122 018	KCB-120	-	120	12,5-14,5	15,5	70	20	4-4	2-2	9,8	25
MP 122 020	KCB-150	-	150	13,9-16,2	17,0	80	22	5-5	2-2	14,7	20
MP 122 022	KCB-185	-	185	15,5-18,0	19,0	85	25	5-5	2-2	17,1	20
MP 122 024	KCB-240	-	240	17,8-20,6	21,5	90	28	-	2-2	24,3	20
MP 122 026	KCB-300	-	300	20,0-23,1	24,5	100	32	-	2-2	30,0	10
MP 122 028	KCB-400	-	400	22,9-26,1	27,5	150	38	-	3-3	70,2	10
MP 122 030	KCB-500	-	500	25,7-29,2	31	160	42	-	3-3	89,7	10



Kabelske spojne čahure Cu barijerne, 1-10 kV

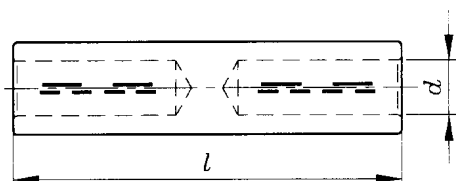
za bakrenu užad prema DIN 48201 i bakrene vodiče prema VDE 0295 i HRN N.CO.015

Materijal: Bakar
Vanjska površina: galvanski pokositrena

Non-tension compression joints Cu, 1-10 kV with oil-stop

for copper conductors acc. to DIN 48201 and copper cable conductors acc. to VDE 0295 and HRN N.CO.015

Material: Copper
Surface: tin-plated



Kataloški broj	Tip proizvoda	Nazivni presjek vodiča mm ²	Promjer vodiča mm VDE 0295 HRN N.CO.015	Dimenzije mm d l		Broj alata	Broj prešanja meh. hidr.		Težina ca. kg/100 kom.	Jedinično pakiranje kom.
Cat.no.	Product type	Conductor cross section mm ²	Conductor diameter mm VDE 0295 HRN N.CO.015	Dimension mm d l		Die Code no.	Number of compressions mech. hydr.		Weight appr. kg/100 pcs.	Packing Unit pcs.
MP 122 406	KCB-B-16	16	4,5-5,3	5,5	50	8	2-2	1-1	1,6	100
MP 122 408	KCB-B-25	25	5,6-6,6	7,0	50	10	2-2	1-1	2,0	100
MP 122 410	KCB-B-35	35	6,6-7,9	8,2	50	12	2-2	1-1	3,0	50
MP 122 412	KCB-B-50	50	7,7-9,1	10,0	65	14	3-3	1-1	4,9	50
MP 122 414	KCB-B-70	70	9,3-11,0	11,5	66	16	3-3	1-1	6,6	25
MP 122 416	KCB-B-95	95	11,0-12,9	13,5	85	18	4-4	2-2	10,9	25
MP 122 418	KCB-B-120	120	12,5-14,5	15,5	86	20	4-4	2-2	11,6	25
MP 122 420	KCB-B-150	150	13,9-16,2	17,0	89	22	4-4	2-2	17,5	20
MP 122 422	KCB-B-185	185	15,5-18,0	19,0	94	25	4-4	2-2	20,8	20
MP 122 424	KCB-B-240	240	17,8-20,6	21,5	100	28	-	2-2	31,6	20
MP 122 426	KCB-B-300	300	20,0-23,1	24,5	112	32	-	2-2	35,6	10

Kabelske spojne čahure Cu redukcijske 1-10 kV

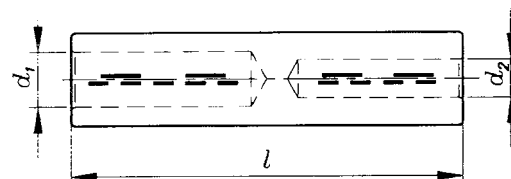
za bakrenu užad prema DIN 48201
i bakrene vodiče prema
VDE 0295 i HRN N.CO.015

Materijal: Bakar
Vanjska površina: galvanski
pokositrena

Non-tension reduction compression joints Cu 1-10 kV

for copper conductors acc. to DIN
48201 and copper cable conductors
acc. to VDE 0295 and HRN N.CO.015

Material: Copper
Surface: tin-plated



Kataloški broj	Tip proizvoda	Nazivni presjek vodiča mm ²		Dimenzije mm			Broj alata	Broj prešanja meh. hidr.		Težina ca. kg/100 kom.	Jedinično pakiranje kom.
		d1	d2	d1	d2	l					
Cat.no.	Product type	Conductor cross section mm ²		Dimension mm			Die Code no.	Number of compressions mech. hydr.		Weight appr. kg/100 pcs.	Packing Unit pcs.
		d1	d2	d1	d2	l					
MP123008	KCB-R-25/10	25	10	7,0	4,5	50,0	10	2-2	1-1	2,4	50
MP123009	KCB-R-25/16		16	7,0	5,5	50,0				2,2	
MP123011	KCB-R-35/10	35	10	8,2	4,5	50,0				3,3	
MP123012	KCB-R-35/16		16	8,2	5,5	50,0	12	2-2	1-1	3,1	50
MP123013	KCB-R-35/25		25	8,2	7,0	50,0				2,9	
MP123015	KCB-R-50/16		16	10,0	5,5	58,0				7,2	
MP123016	KCB-R-50/25	50	25	10,0	7,0	58,0	14	3-3	1-1	7,1	50
MP123017	KCB-R-50/35		35	10,0	8,2	58,0				7,0	
MP123020	KCB-R-70/35	70	35	11,5	8,2	58,0	16	3-3	1-1	6,8	20
MP123021	KCB-R-70/50		50	11,5	10,0	66,0				7,2	
MP123024	KCB-R-95/50	95	50	13,5	10,0	75,0	18	4-4	2-2	11,2	20
MP123025	KCB-R-95/70		70	13,5	11,5	75,0				10,6	
MP123028	KCB-R-120/50		50	15,5	10,0	75,0				13,7	
MP123029	KCB-R-120/70	120	70	15,5	11,5	75,0	20	4-4	2-2	13,1	20
MP123030	KCB-R-120/95		95	15,5	13,5	86,0				14,1	
MP123035	KCB-R-150/50		50	17,0	10,0	77,0				18,8	
MP123036	KCB-R-150/70	150	70	17,0	11,5	77,0	22	4-4	2-2	18,2	20
MP123037	KCB-R-150/95		95	17,0	13,5	89,0				16,0	
MP123038	KCB-R-150/120		120	17,0	15,5	89,0				14,5	
MP123042	KCB-R-185/95		95	19,0	13,5	91,0				24,9	
MP123043	KCB-R-185/120	185	120	19,0	15,5	91,0	25	4-4	2-2	23,4	20
MP123044	KCB-R-185/150		150	19,0	17,0	91,0				21,9	
MP123050	KCB-R-240/120		120	21,5	15,5	94,0				35,4	10
MP123051	KCB-R-240/150	240	150	21,5	17,0	94,0	28	-	2-2	34,0	
MP123052	KCB-R-240/185		185	21,5	19,0	97,0				33,3	
MP123060	KCB-R-300/150		150	24,5	17,0	105				47,7	
MP123061	KCB-R-300/185	300	185	24,5	19,0	105	32	-	3-3	45,1	10
MP123062	KCB-R-300/240		240	24,5	21,5	105				41,7	



**Kabelske spojne čahure Al
1-10 kV
prema DIN 46267, dio 2**

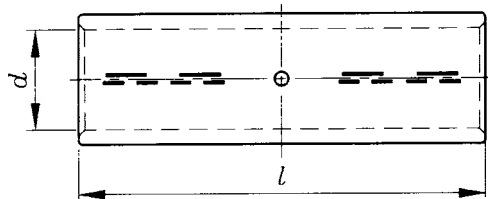
**Non - tension compression joints Al
1-10 kV
acc. to DIN 46267, sheet 2**

za aluminijsku užad prema DIN 48201
i aluminijske vodiče prema VDE 0295
i HRN N.CO.015

for aluminium conductors acc. to
DIN 48201 and aluminium cable conductors
acc. to VDE 0295 and HRN N.CO.015

Materijal: Aluminij
Vanjska površina: čista

Material: Aluminium
Surface: uncoated



Kataloški broj	Tip proizvoda	Nazivni presjek vodiča mm ²			Promjer vodiča mm VDE 0295 HRN N.CO.015	Dimenzije mm		Broj alata	Broj preš. meh. hidr.		Težina ca. kg/100 kom.	Jedinično pakiranje kom.
		OV/SV	SJ	OJ		d	l					
Cat.no.	Product type	Conductor cross section mm ²			Conductor diameter mm VDE 0295 HRN N.CO.015	Dimension mm		Die Code no.	Number of compressions mech. hydr.		Weight appr. kg/100 pcs.	Packing Unit pcs.
		RM/SM	SE	RE		d	l					
MP122 102	KCA-16	16	-	16	4,5-5,3	5,6	55	12	3-3	-	1,6	50
MP122 104	KCA-25	25	35	25	5,6-6,6	6,8	70	12	4-4	2-2	2,0	50
MP122 106	KCA-35	35	50	35	6,6-7,9	8,0	85	14	5-5	2-2	2,8	50
MP122 108	KCA-50	50	70	50	7,7-9,1	9,8	85	16	5-5	2-2	3,5	50
MP122 110	KCA-70	70	95	-	9,3-11,0	11,2	105	18	6-6	3-3	6,1	25
MP122 112	KCA-95	95	120	-	11,0-12,9	13,2	105	22	6-6	3-3	9,6	25
MP122 114	KCA-120	120	150	-	12,5-14,5	14,7	105	22	6-6	3-3	9,0	20
MP122 116	KCA-150	150	185	-	13,9-16,2	16,3	125	25	6-6	3-3	13,6	20
MP122 118	KCA-185	185	240	-	15,5-18,0	18,3	125	28	6-6	3-3	15,8	20
MP122 120	KCA-240	240	300	-	17,8-20,6	21,0	145	32	8-8	3-3	21,5	100
MP122 122	KCA-300	300	-	-	20,1-23,1	23,3	145	34	8-8	3-3	22,0	10
MP122 124	KCA-400	400	-	-	22,9-26,1	26,0	210	38	-	4-4	60,0	10
MP122 126	KCA-500	500	-	-	25,7-29,2	29,0	210	44	-	4-4	92,5	10

Kabelske spojne čahure Al barijerne, 1-10 kV

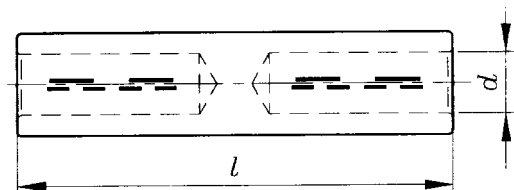
Non - tension compression joints Al 1-10 kV

za aluminijску užad prema DIN 48201 i aluminijске vodiče prema VDE 0295 i HRN N.CO.015

for aluminium conductors acc. to DIN 48201 and aluminium cable conductors acc. to VDE 0295 and HRN N.CO.015

Materijal: Aluminij
Vanjska površina: čista

Material: Aluminium
Surface: uncoated



Kataloški broj	Tip proizvoda	Nazivni presjek vodiča mm ²	Promjer vodiča mm VDE 0295 HRN N.CO.015	Dimenzije mm d l		Broj alata	Broj preš. meh. hidr.		Težina ca. kg/100 kom.	Jedinično pakiranje kom.
Cat.no.	Product type	Conductor cross section mm ²	Conductor diameter mm VDE 0295 HRN N.CO.015	Dimension mm d l		Die Code no.	Number of compressions mech. hydr.		Weight appr. kg/100 pcs.	Packing Unit pcs.
MP 122502	KCA-B-16	16	4,5-5,3	5,4	75	12	3-3	-	2,1	50
MP 122504	KCA-B-25	25	5,6-6,6	6,8	75	12	4-4	2-2	1,9	50
MP 122506	KCA-B-35	35	6,6-7,9	8,0	90	14	5-5	2-2	3,0	50
MP 122508	KCA-B-50	50	7,7-9,1	9,8	90	16	5-5	2-2	3,8	50
MP 122510	KCA-B-70	70	9,3-11,0	11,2	112	18	6-6	3-3	5,9	25
MP 122512	KCA-B-95	95	11,0-12,9	13,2	120	22	6-6	3-3	9,5	25
MP 122514	KCA-B-120	120	12,5-14,5	14,7	120	22	6-6	3-3	9,7	20
MP 122516	KCA-B-150	150	13,9-16,2	16,3	130	25	6-6	3-3	11,2	20
MP 122518	KCA-B-185	185	15,5-18,0	18,3	130	28	6-6	3-3	16,4	20
MP 122520	KCA-B-240	240	17,8-20,6	21,0	158	32	8-8	3-3	21,6	10



Kabelske spojne čahure Al redukcijske 1-10 kV

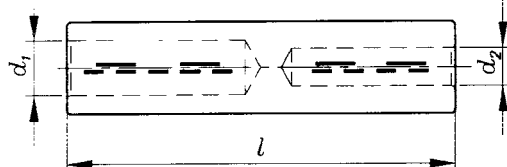
Non - tension compression joints Al 1-10 kV

za aluminijску užad prema DIN 48201
i aluminijске vodiče prema VDE 0295
i HRN N.CO.015

for aluminium conductors acc. to DIN
48201 and aluminium cable conductors
acc. to VDE 0295 and HRN N.CO.015

Materijal: Aluminij
Vanjska površina: čista

Material: Aluminium
Surface: uncoated



Kataloški broj	Tip proizvoda	Nazivni presjek vodiča mm ²				Dimenzije mm			Broj alata	Broj preš. meh. hydr.		Težina ca. kg/100 kom.	Jedinično pakiranje kom.
		d1	d2	d1	d2	l							
Cat.no.	Product type	Conductor cross section mm ²				Dimension mm			Die Code no.	Number of compressions mech. hydr.		Weight appr. kg/100 pcs.	Packing Unit pcs.
		OV/SV	SJ	OV/SV	SJ	d1	d2	l					
		RM/SM	SE	RM/SM	SE								
MP123108	KCA-R-16/10	16	25	10	-	5,4	5,0	75,0	12	4-4	2-2	1,8	50
MP123109	KCA-R-25/16	25	35	16	-	6,8	5,4	75,0	12	4-4	2-2	1,7	50
MP123112	KCA-R-35/16	35	50	16	-	8,0	5,4	85,0	14	5-4	2-2	3,8	50
MP123113	KCA-R-35/25			25	35	8,0	6,8	85,0				3,7	
MP123116	KCA-R-50/25	50	70	25	35	9,8	6,8	90	16	5-4	2-2	3,8	50
MP123117	KCA-R-50/35			35	50	9,8	8,0	90		5-5	2-2	3,7	20
MP123118	KCA-R-70/16			16	-	11,2	5,4	100		6-4	3-2	6,1	
MP123119	KCA-R-70/25	70	95	25	35	11,2	6,8	100	18	6-4	3-2	6,0	20
MP123120	KCA-R-70/35			35	50	11,2	8,0	100		6-5	3-2	5,9	
MP123121	KCA-R-70/50			50	70	11,2	9,8	100		6-5	3-2	5,8	
MP123122	KCA-R-95/25			25	35	13,2	6,8	105		6-4	3-2	7,8	
MP123123	KCA-R-95/35	95	120	35	50	13,2	8,0	105	22	6-5	3-2	7,6	20
MP123124	KCA-R-95/50			50	70	13,2	9,8	105		6-5	3-2	7,4	
MP123125	KCA-R-95/70			70	95	13,2	11,2	115		6-6	3-3	8,9	
MP123126	KCA-R-120/25			25	35	14,7	6,8	105		6-4	3-2	8,8	
MP123127	KCA-R-120/35			35	50	14,7	8,0	105		6-5	3-2	8,5	
MP123128	KCA-R-120/50	120	150	50	70	14,7	9,8	105	22	6-5	3-2	8,3	20
MP123129	KCA-R-120/70			70	95	14,7	11,2	120		6-6	3-3	10,8	
MP123130	KCA-R-120/95			95	120	14,7	13,2	120		6-6	3-3	10,4	
MP123134	KCA-R-150/35			35	50	16,3	8,0	110		6-5	3-2	10,5	
MP123135	KCA-R-150/50			50	70	16,3	9,8	110		6-5	3-2	10,3	
MP123136	KCA-R-150/70	150	185	70	95	16,3	11,2	125	25	6-6	3-3	12,4	20
MP123137	KCA-R-150/95			95	120	16,3	13,2	125		6-6	3-3	12,2	
MP123138	KCA-R-150/120			120	150	16,3	14,7	125		6-6	3-3	12,0	
MP123141	KCA-R-185/70			70	95	18,3	11,2	125		6-6	3-3	16,5	
MP123140	KCA-R-185/95			95	120	18,3	13,2	125		6-6	3-3	16,3	
MP123143	KCA-R-185/120	185	240	120	150	18,3	14,7	125	28	6-6	3-3	16,2	20
MP123144	KCA-R-185/150			150	185	18,3	16,3	130		6-6	3-3	16,9	
MP123151	KCA-R-240/150	240	300	150	185	21,0	16,3	148	32	8-8	3-3	21,0	10
MP123152	KCA-R-240/185			185	240	21,0	18,3	148				21,3	

Kabelske čahure MS-vijčane s otvorom za lemljenje

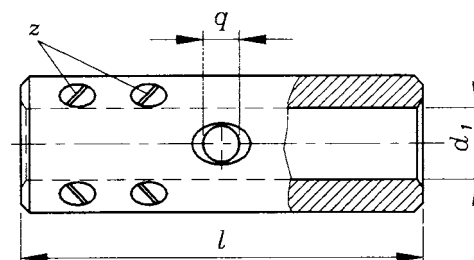
Connection - sleeves screw type with soldering hole

za bakrenu užad prema DIN 48201 i bakrene vodiče prema VDE 0295 i HRN N.CO.015

for copper conductors acc. to DIN 48201 and copper cable conductors acc. to VDE 0295 and HRN N.CO.015

Materijal: Mesing
Vanjska površina: čista

Material: Copper
Surface: uncoated



Kataloški broj	Tip proizvoda	Nazivni presjek vodiča mm ²	l	Dimenzije mm			Težina ca. kg/100 kom.	Jedinično pakiranje kom.
Cat.no.	Product type	Conductor cross section mm ²	l	d1	q	z	Weight appr. kg/100 pcs.	Packing Unit pcs.
MP122 804	KCMS-10	10	43	4,5	4,5	6	1,75	50
MP122 806	KCMS-16	16	45	5,5	5,0	6	1,85	50
MP122 808	KCMS-25	25	48	7,0	6,0	6	2,70	50
MP122 810	KCMS-35	35	52	8,5	6,0	6	3,80	25
MP122 812	KCMS-50	50	56	10,0	6,0	8	3,75	25
MP122 814	KCMS-70	70	60	12,0	6,0	8	5,75	25
MP122 816	KCMS-95	95	65	13,5	7,0	8	7,65	20
MP122 818	KCMS-120	120	70	15,0	7,0	8	9,90	20

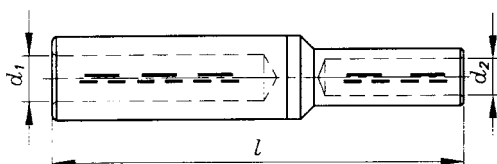


Kabelske spojne čahure Al/Cu 1-10 kV

Non-tension bimetallic compression joints Al/Cu 1-10 kV

za bakrenu i aluminijску užad prema
DIN 48201 odnosno bakrene i alumi-
nijske vodiče prema VDE 0295
i HRN N.CO.015

for copper and aluminium conductors
acc. to DIN 48201 or copper and
aluminium cable conductors
acc. to VDE 0295 and HRN N.CO.015



Materijal: Aluminij i bakar
Vanjska površina: čista

Material: Aluminium und copper
Surface: uncoated

Kataloški broj	Tip proizvoda	Nazivni presjek vodiča mm ²			Promjer vodiča mm		Dimenzije mm			Broj alata		Broj prešanja				Težina ca. kg/100 kom.	Jedinično pakiranje kom.
		Al OV/SV	Al SJ	Cu OV/SV	Al d1	Cu d2	d1	d2	l	Al	Cu	meh. Al	hydr. Cu	Al	Cu		
Cat.no.	Product type	Conductor cross section mm ²			Conductor diameter mm		Dimension mm			Die Code no.		Number of compressions				Weight appr. kg/100 pcs.	Packing Unit pcs.
		Al RM/SM	Al SE	Cu RM/SM	Al d1	Cu d2	d1	d2	l	Al	Cu	Al	Cu	Al	Cu		
MP 124 007	KCAB-16/2,5			2,5		2,20	5,4	2,50	67,0		6	3	2	-	-	2,8	
MP 124 008	KCAB-16/4			4		2,70	5,4	3,00	67,0		6	3	2	-	-	2,6	
MP 124 009	KCAB-16/6	16	-	6	4,5-5,3	3,30	5,4	3,60	67,0	12	6	3	2	-	-	2,4	
MP 124 010	KCAB-16/10			10		4,10	5,4	4,50	67,0		6	3	2	-	-	2,2	25
MP 124 011	KCAB-16/16			16		5,10	5,4	5,50	67,0		8	3	2	-	-	3,2	
MP 124 015	KCAB-25/10			10		4,10	6,8	4,50	67,0		6	4	2	-	-	2,1	
MP 124 016	KCAB-25/16	25	35	16	5,6-6,6	5,10	6,8	5,50	67,0	12	8	4	2	2	1	3,0	25
MP 124 017	KCAB-25/25			25		6,30	6,8	7,00	67,0		10	4	2	2	1	3,5	
MP 124 020	KCAB-35/16			16		5,10	8,0	5,50	76,0		8	5	2	2	1	4,8	
MP 124 021	KCAB-35/25	35	50	25	6,6-7,9	6,30	8,0	7,0	76,0	14	10	5	2	2	1	4,5	25
MP 124 022	KCAB-35/35			35		7,50	8,0	8,2	76,0		12	5	2	2	1	4,2	
MP 124 025	KCAB-50/16			16		5,10	9,8	5,5	76,0		8	5	2	2	1	6,0	
MP 124 026	KCAB-50/25			25		6,30	9,8	7,0	76,0	16	10	5	2	2	1	6,1	25
MP 124 027	KCAB-50/35	50	70	35	7,7-9,1	7,50	9,8	8,2	76,0		12	5	2	2	1	6,2	
MP 124 028	KCAB-50/50			50		9,00	9,8	10,0	83,0		14	5	3	2	1	7,2	
MP 124 032	KCAB-70/16			16		5,10	11,2	5,5	86,0		8	5	2	2	1	6,0	
MP 124 033	KCAB-70/25			25		6,30	11,2	7,0	86,0	18	10	5	2	2	1	6,1	
MP 124 034	KCAB-70/35	70	95	35	9,3-11,0	7,50	11,2	8,2	86,0		12	5	2	2	1	6,2	20
MP 124 035	KCAB-70/50			50		9,00	11,2	10,0	93,0		14	5	3	2	1	7,2	
MP 124 036	KCAB-70/70			70		10,50	11,2	11,5	93,0		16	5	3	2	1	7,2	
MP 124 040	KCAB-95/25			25		6,30	13,2	7,0	91,0		10	6	2	3	1	12,0	
MP 124 041	KCAB-95/35			35		7,50	13,2	8,2	91,0		12	6	2	3	1	12,3	
MP 124 042	KCAB-95/50	95	120	50	11,0-12,9	9,00	13,2	10,0	98,0	22	14	6	3	3	1	14,0	20
MP 124 043	KCAB-95/70			70		10,50	13,2	11,5	98,0		16	6	3	3	1	14,2	
MP 124 044	KCAB-95/95			95		12,50	13,2	13,5	107,0		18	6	4	3	2	16,0	
MP 124 050	KCAB-120/25			25		6,3	14,7	7,0	91,0		10	6	2	3	1	12,8	
MP 124 051	KCAB-120/35			35		7,5	14,7	8,2	91,0		12	6	2	3	1	13,2	
MP 124 052	KCAB-120/50	120	150	50	12,5-14,5	9,0	14,7	10,0	98,0	22	14	6	3	3	1	14,3	20
MP 124 053	KCAB-120/70			70		10,50	14,7	11,5	98,0		16	6	3	3	1	14,5	
MP 124 054	KCAB-120/95			95		12,50	14,7	13,5	108,0		18	6	4	3	2	16,3	
MP 124 055	KCAB-120/120			120		14,00	14,7	15,5	108,0		20	6	4	3	2	16,5	

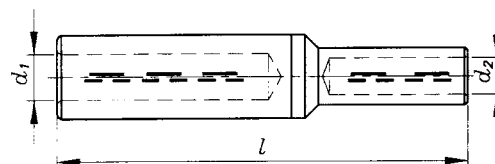
Kabelske spojne čahure Al/Cu 1-10 kV Non-tension bimetallic compression joints Al/Cu 1-10 kV

za bakrenu i aluminijsku užad prema DIN 48201 odnosno bakrene i aluminijske vodiče prema VDE 0295 i HRN N.CO.015

for copper and aluminium conductors acc. to DIN 48201 or copper and aluminium cable conductors acc. to VDE 0295 and HRN N.CO.015

Materijal: Aluminij i bakar
Vanjska površina: čista

Material: Aluminium und copper
Surface: uncoated



Kataloški broj	Tip proizvoda	Nazivni presjek vodiča mm ²			Promjer vodiča mm		Dimenzije mm			Broj alata		Broj prešanja				Težina ca. kg/100 kom.	Jedinično pakiranje kom.		
		Al OV/SV	Al SJ	Cu OV/SV	Al d1	Cu d2	d1	d2	l	Al	Cu	meh. Al	hidr. Cu	Al	Cu				
Cat.no.	Product type	Conductor cross section mm ²			Conductor diameter mm		Dimension mm			Die Code no.		Number of compressions mech. hydr.				Weight appr. kg/100 pcs.	Packing Unit pcs.		
		Al RM/SM	Al SE	Cu RM/SM	Al d1	Cu d2	d1	d2	l	Al	Cu	Al	Cu	Al	Cu	Al	Cu		
MP 124 059	KCAB-150/35			35		7,5	16,3	8,2	104			14	6	2	3	1	13,2		
MP 124 060	KCAB-150/50			50		9,00	16,3	10,0	104			14	6	3	3	1	14,2		
MP 124 061	KCAB-150/70			70		10,50	16,3	11,5	104			16	6	3	3	1	14,4		
MP 124 062	KCAB-150/95	150	185	95	13,9-16,2	12,50	16,3	13,5	113	25	18	6	4	3	2	16,7	15		
MP 124 063	KCAB-150/120			120		14,00	16,3	15,5	115			20	6	4	3	2	16,9		
MP 124 064	KCAB-150/150			150		15,80	16,3	17,0	115			22	6	4	3	2	19,7		
MP 124 070	KCAB-185/70			70		10,50	18,3	11,5	103			16	6	3	3	1	16,2		
MP 124 071	KCAB-185/95			95		12,50	18,3	13,5	113			18	6	4	3	2	17,2		
MP 124 072	KCAB-185/120	185	240	120	15,5-18,0	14,00	18,3	15,5	115	28	20	6	4	3	2	18,3	15		
MP 124 073	KCAB-185/150			150		15,80	18,3	17,0	115			22	6	4	3	2	10,7		
MP 124 074	KCAB-185/185			185		17,50	18,3	19,0	117			25	6	4	3	2	12,9		
MP 124 080	KCAB-240/120			120		14,00	21,0	15,5	130			20	8	4	3	2	27,7		
MP 124 081	KCAB-240/150			150		15,00	21,0	17,0	130			22	8	4	3	2	28,0		
MP 124 082	KCAB-240/185	240	300	185	17,8-20,6	17,50	21,0	19,0	132	32	25	8	4	3	2	29,6	15		
MP 124 083	KCAB-240/240			240		20,30	21,0	21,5	132			32	-	-	3	2	31,0		



Kabelske spojne čahure Cu 10-35 kV

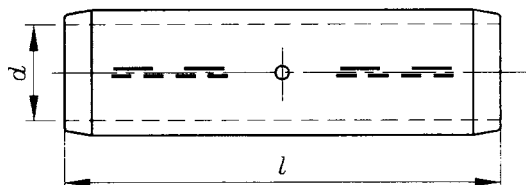
Non - tension compression joints Cu 10-35 kV

za bakrene vodiče prema
VDE 0295 i HRN N.CO.015

for copper cable conductors
acc. to VDE 0295 and HRN N.CO.015

Materijal: Bakar
Vanjska površina: galvanski
pokositrena

Material: Copper
Surface: tin-plated



Kataloški broj	Tip proizvoda	Nazivni presjek vodiča mm ²	Promjer vodiča mm VDE 0295 HRN N.CO.015	Dimenzije mm d l		Broj alata	Broj preš. meh. hydr.		Težina ca. kg/100 kom.	Jedinično pakiranje kom.
Cat.no.	Product type	Conductor cross section mm ²	Conductor diameter mm VDE 0295 HRN N.CO.015	Dimension mm d l		Die Code no.	Number of compressions mech. hydr.		Weight appr. kg/100 pcs.	Packing Unit pcs.
MP 122 206	KCB-V-16	16	4,5-5,3	5,5	50	8	2-2	1-1	1,5	25
MP 122 208	KCB-V-25	25	5,6-6,6	7,0	50	10	2-2	1-1	1,8	25
MP 122 210	KCB-V-35	35	6,6-7,9	8,2	50	12	2-2	1-1	3,1	25
MP 122 212	KCB-V-50	50	7,2-9,1	10,0	65	14	3-3	1-1	4,7	25
MP 122 214	KCB-V-70	70	9,3-11,0	11,5	65	16	3-3	1-1	5,9	25
MP 122 216	KCB-V-95	95	11,0-12,9	13,5	90	18	4-4	2-2	11,1	25
MP 122 218	KCB-V-120	120	12,5-14,5	15,5	90	20	4-4	2-2	12,8	20
MP 122 220	KCB-V-150	150	13,9-16,2	17,0	106	22	4-4	2-2	15,4	20
MP 122 222	KCB-V-185	185	15,5-18,0	19,0	106	25	4-4	2-2	21,3	20
MP 122 224	KCB-V-240	240	17,8-20,6	21,5	110	28	-	2-2	29,7	10
MP 122 226	KCB-V-300	300	20,0-23,1	24,5	116	32	-	2-2	34,8	10
MP 122 228	KCB-V-400	400	22,9-26,1	27,5	160	38	-	3-3	74,8	10
MP 122 230	KCB-V-500	500	25,7-29,2	31,0	175	42	-	3-3	98,1	10

Kabelske spojne čahure Cu barijerne, 10-35 kV

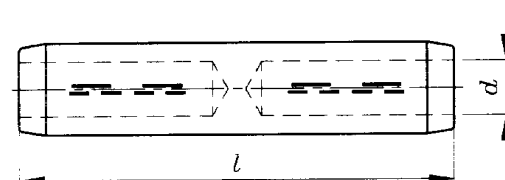
Non - tension compression joints Cu 10-35 kV with oil-stop

za bakrene vodiče prema VDE 0295 i HRN N.CO.015

for copper cable conductors acc. to VDE 0295 and HRN N.CO.015

Materijal: Bakar
Vanjska površina: galvanski pokositrena

Material: Copper
Surface: tin-plated



Kataloški broj	Tip proizvoda	Nazivni presjek vodiča mm ²	Promjer vodiča mm VDE 0295 HRN N.CO.015	Dimenzije mm d l		Broj alata	Broj preš. meh. hidr.		Težina ca. kg/100 kom.	Jedinično pakiranje kom.
Cat.no.	Product type	Conductor cross section mm ²	Conductor diameter mm VDE 0295 HRN N.CO.015	Dimension mm d l		Die Code no.	Number of compressions mech. hydr.		Weight appr. kg/100 pcs.	Packing Unit pcs.
MP 122608	KCB-VB-25	25	5,6-6,6	7,0	50	10	2-2	1-1	2,0	25
MP 122610	KCB-VB-35	35	6,6-7,9	8,2	50	12	2-2	1-1	3,1	25
MP 122612	KCB-VB-50	50	7,2-9,1	10,0	70	14	3-3	1-1	6,4	25
MP 122614	KCB-VB-70	70	9,3-11,0	11,5	70	16	3-3	1-1	8,0	25
MP 122616	KCB-VB-95	95	11,0-12,9	13,5	90	18	4-4	2-2	11,2	25
MP 122618	KCB-VB-120	120	12,5-14,5	15,5	90	20	4-4	2-2	13,0	25
MP 122620	KCB-VB-150	150	13,9-16,2	17,0	106	22	4-4	2-2	19,5	25
MP 122622	KCB-VB-185	185	15,5-18,0	19,0	106	25	4-4	2-2	24,1	25
MP 122624	KCB-VB-240	240	17,8-20,6	21,5	115	28	-	2-2	35,3	25
MP 122626	KCB-VB-300	300	20,1-23,1	24,5	122	32	-	2-2	41,5	25



Kabelske spojne čahure Cu redukcijske 10-35 kV

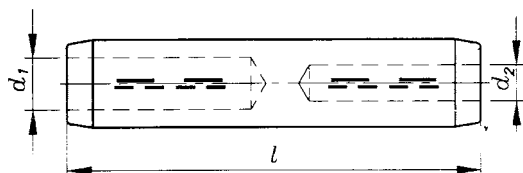
Non-tension reduction compression joints Cu 10-35 kV

za bakrene vodiče prema
VDE 0295 i HRN N.CO.015

for copper cable conductors
acc. to VDE 0295 and HRN N.CO.015

Materijal: Bakar
Vanjska površina: galvanski
pokositrena

Material: Copper
Surface: tin-plated



Kataloški broj	Tip proizvoda	Nazivni presjek vodiča mm ²		Dimenzije mm			Broj alata	Broj preš. meh. hidr.		Težina ca. kg/100 kom.	Jedinično pakiranje kom.
		d1	d2	d1	d2	l					
Cat.no.	Product type	Conductor cross section mm ²		Dimension mm			Die Code no.	Number of compressions mech. hydr.		Weight appr. kg/100 pcs.	Packing Unit pcs.
		d1	d2	d1	d2	l					
MP123208	KCB-VR-25/10	25	10	7,0	4,5	50,0	10	2-2	1-1	2,9	25
MP123209	KCB-VR-25/16		16	7,0	5,5	50,0				2,8	
MP123211	KCB-VR-35/10	35	10	8,2	4,5	50,0	12	2-2	1-1	3,3	25
MP123212	KCB-VR-35/16		16	8,2	5,5	50,0				3,2	
MP123213	KCB-VR-35/25		25	8,2	7,0	50,0				3,3	
MP123215	KCB-VR-50/16	50	16	10,0	5,5	70,0	14	3-3	1-1	5,5	25
MP123216	KCB-VR-50/25		25	10,0	7,0	70,0				5,3	
MP123217	KCB-VR-50/35		35	10,0	8,2	70,0				5,2	
MP123220	KCB-VR-70/35	70	35	11,5	8,2	70,0	16	3-3	1-1	6,8	25
MP123221	KCB-VR-70/50		50	11,5	10,0	70,0				6,7	
MP123224	KCB-VR-95/50	95	50	13,5	10,0	90,0	18	4-4	2-2	11,6	25
MP123225	KCB-VR-95/70		70	13,5	11,5	90,0				11,3	
MP123228	KCB-VR-120/50	120	50	15,5	10,0	90,0	20	4-4	2-2	13,3	25
MP123229	KCB-VR-120/70		70	15,5	11,5	90,0				12,9	
MP123230	KCB-VR-120/95		95	15,5	13,5	90,0				12,6	
MP123235	KCB-VR-150/50	150	50	17,0	10,0	106	22	4-4	2-2	24,8	25
MP123236	KCB-VR-150/70		70	17,0	11,5	106				23,5	
MP123237	KCB-VR-150/95		95	17,0	13,5	106				21,5	
MP123238	KCB-VR-150/120		120	17,0	15,5	106				20,3	
MP123242	KCB-VR-185/95	185	95	19,0	13,5	106	25	4-4	2-2	28,0	20
MP123243	KCB-VR-185/120		120	19,0	15,5	106				25,5	
MP123244	KCB-VR-185/150		150	19,0	17,0	106				23,6	
MP123250	KCB-VR-240/120	240	120	21,5	15,5	110	28	-	2-2	36,0	20
MP123251	KCB-VR-240/150		150	21,5	17,0	110				33,8	
MP123252	KCB-VR-240/185		185	21,5	19,0	110				32,6	

Kabelske spojne čahure Al 10-35 kV

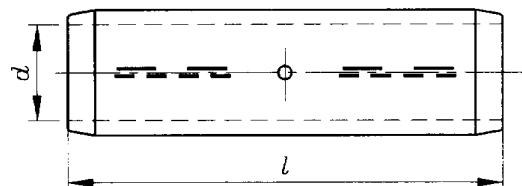
za alumijske vodiče prema
VDE 0295 i HRN N.CO.015

Materijal: Aluminija
Vanjska površina: čista

Non-tension compression joints Al 10-35 kV

for aluminium cable conductors
acc. to VDE 0295 and HRN N.CO.015

Material: Aluminium
Surface: uncoated



Kataloški broj	Tip proizvoda	Nazivni presjek vodiča mm ²	Promjer vodiča mm VDE 0295 HRN N.CO.015	Dimenzije mm d l		Broj alata	Broj preš. meh. hidr.		Težina ca. kg/100 kom.	Jedinično pakiranje kom.
Cat.no.	Product type	Conductor cross section mm ²	Conductor diameter VDE 0295 HRN N.CO.015	Dimension mm d l		Die Code no.	Number of compressions mech. hydr.		Weight appr. kg/100 pcs.	Packing Unit pcs.
MP 122304	KCA-V-25	25	5,6-6,5	6,8	90	12	4-4	2-2	2,9	25
MP 122306	KCA-V-35	35	6,6-7,5	8,0	90	14	4-4	2-2	2,7	25
MP 122308	KCA-V-50	50	7,2-8,6	9,8	90	16	4-4	2-2	3,4	25
MP 122310	KCA-V-70	70	9,3-10,2	11,2	95	18	4-4	2-2	4,6	25
MP 122312	KCA-V-95	95	11,0-12,0	13,2	100	22	4-4	2-2	6,8	25
MP 122314	KCA-V-120	120	12,5-13,5	14,7	105	22	4-4	2-2	7,4	25
MP 122316	KCA-V-150	150	13,9-15,0	16,3	105	25	4-4	2-2	8,7	25
MP 122318	KCA-V-185	185	15,5-16,8	18,3	125	28	5-5	2-2	13,4	20
MP 122320	KCA-V-240	240	17,8-19,2	21	125	32	5-5	2-2	15,7	20
MP 122322	KCA-V-300	300	20,0-21,6	23,3	125	34	5-5	2-2	16,3	10
MP 122324	KCA-V-400	400	22,9-24,6	26	150	38	-	3-3	25,8	10
MP 122326	KCA-V-500	500	25,7-27,6	29	170	44	-	3-3	32	10



Kabelske spojne čahure Al barijerne, 10-35 kV

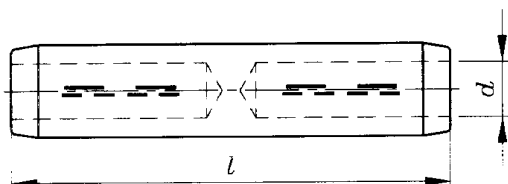
za alumijske vodiče prema VDE 0295 i HRN N.CO.015

Materijal: Aluminij
Vanjska površina: čista

Non-tension compression joints Al 10-35 kV with oil-stop

for aluminium cable conductors acc. to VDE 0295 and HRN N.CO.015

Material: Aluminium
Surface: uncoated



Kataloški broj	Tip proizvoda	Nazivni presjek vodiča mm ²	Promjer vodiča mm VDE 0295 HRN N.CO.015	Dimenzije mm d l		Broj alata	Broj preš. meh. hidr.		Težina ca. kg/100 kom.	Jedinično pakiranje kom.
Cat.no.	Product type	Conductor cross section mm ²	Conductor diameter mm VDE 0295 HRN N.CO.015	Dimension mm d l		Die Code no.	Number of compressions mech. hydr.		Weight appr. kg/100 pcs.	Packing Unit pcs.
MP 122704	KCA-VB-25	25	5,6-6,6	6,8	88	12	4-4	2-2	1,9	25
MP 122706	KCA-VB-35	35	6,6-7,9	8,0	90	14	4-4	2-2	3,0	25
MP 122708	KCA-VB-50	50	7,2-9,1	9,8	90	16	4-4	2-2	3,8	25
MP 122710	KCA-VB-70	70	9,3-11,0	11,2	100	18	4-4	2-2	5,9	25
MP 122712	KCA-VB-95	95	11,0-12,9	13,2	105	22	4-4	2-2	9,2	25
MP 122714	KCA-VB-120	120	12,5-14,5	14,7	110	22	4-4	2-2	10,3	25
MP 122716	KCA-VB-150	150	13,9-16,2	16,3	110	25	4-4	2-2	12,0	25
MP 122718	KCA-VB-185	185	15,5-18,0	18,3	130	28	5-5	2-2	15,6	20
MP 122720	KCA-VB-240	240	17,8-20,6	21,0	136	32	5-5	2-2	19,5	20

Kabelske spojne čahure Al redukcijske, 10-35 kV

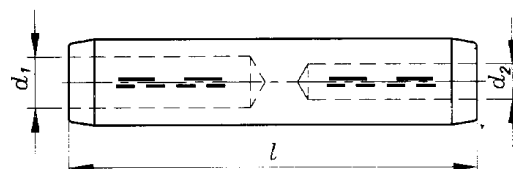
za aluminijске vodiče različitih nazivnih presjeka prema VDE 0295 i HRN N.CO.015

Materijal: Aluminij
Vanjska površina: čista

Non-tension compression joints Al 10-35 kV

for aluminium cable conductors suitable for different cross sections, acc. to VDE 0295 and HRN N.CO.015

Material: Aluminium
Surface: uncoated



Kataloški broj	Tip proizvoda	Nazivni presjek vodiča mm ²		Dimenzije mm			Broj alata	Broj preš. meh. hidr.		Težina ca. kg/100 kom.	Jedinično pakiranje kom.
		d1	d2	d1	d2	l					
Cat.no.	Product type	Conductor cross section mm ²		Dimension mm			Die Code no.	Number of compressions mech. hydr.		Weight appr. kg/100 pcs.	Packing Unit pcs.
		d1	d2	d1	d2	l					
MP123309	KCA-VR-25/16	25	16	6,8	5,6	88	12	4-4	2-2	2,0	25
MP123312	KCA-VR-35/16	35	16	8,0	5,6	90	14	4-4	2-2	2,9	25
MP123313	KCA-VR-35/25		25	8,0	6,8	90				2,8	
MP123316	KCA-VR-50/25	50	25	9,8	6,8	90	16	4-4	2-2	3,6	25
MP123317	KCA-VR-50/35		35	9,8	8,0	90	16	4-4	2-2	3,5	
MP123319	KCA-VR-70/25	70	25	11,2	6,8	100	18	4-4	2-2	4,9	25
MP123320	KCA-VR-70/35		35	11,2	8,0	100	18	4-4	2-2	4,7	
MP123321	KCA-VR-70/50		50	11,2	9,8	100	18	4-4	2-2	4,4	
MP123323	KCA-VR-95/35	95	35	13,2	8,0	105	22	4-4	2-2	8,0	25
MP123324	KCA-VR-95/50		50	13,2	9,8	105	22	4-4	2-2	7,6	
MP123325	KCA-VR-95/70		70	13,2	11,2	105	22	4-4	2-2	7,4	
MP123327	KCA-VR-120/35	120	35	14,7	8,0	110	22	4-4	2-2	7,8	25
MP123328	KCA-VR-120/50		50	14,7	9,8	110	22	4-4	2-2	7,3	
MP123329	KCA-VR-120/70		70	14,7	11,2	110	22	4-4	2-2	7,1	
MP123330	KCA-VR-120/95		95	14,7	13,2	110	22	4-4	2-2	6,5	
MP123334	KCA-VR-150/35	150	35	16,3	8,0	110	25	4-4	2-2	10,5	25
MP123335	KCA-VR-150/50		50	16,3	9,8	110	25	4-4	2-2	10,1	
MP123336	KCA-VR-150/70		70	16,3	11,2	110	25	4-4	2-2	9,8	
MP123337	KCA-VR-150/95		95	16,3	13,2	110	25	4-4	2-2	9,5	
MP123338	KCA-VR-150/120		120	16,3	14,7	110	25	4-4	2-2	8,8	
MP123343	KCA-VR-185/120	185	120	18,3	14,7	125	28	5-5	2-2	13,7	20
MP123344	KCA-VR-185/150		150	18,3	16,3	130	28	5-5	2-2	13,1	
MP123351	KCA-VR-240/150	240	150	21,0	16,3	136	32	5-5	2-2	18,1	20
MP123352	KCA-VR-240/185		185	21,0	18,3	136	32	5-5	2-2	17,2	



Kabelske spojne čahure Al/Cu 10-35 kV

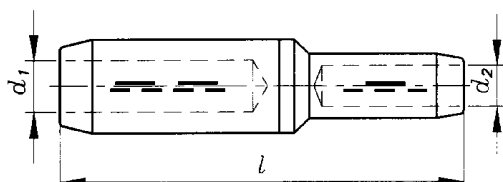
za bakrene i aluminijske vodiče
prema VDE 0295 i HRN N.CO.015

Materijal: Aluminij
Vanjska površina: čista

Non-tension bimetallic compression joints Al/Cu 10-35 kV

for copper and aluminium cables
acc. to VDE 0295 and HRN N.CO.015

Material: Aluminium
Surface: uncoated



Kataloški broj	Tip proizvoda	Nazivni presjek vodiča mm ²		Dimenzije mm			Broj alata		Broj prešanja meh. hidr.				Težina ca. kg/100 kom.	Jedinično pakiranje kom.
		Al	Cu	d1	d2	l	Al	Cu	Al	Cu	Al	Cu		
Cat.no.	Product type	Conductor cross section mm ²		Dimension mm			Die Code no.		Number of compressions mech. hydr.				Weight appr. kg/100 pcs.	Packing Unit pcs.
		Al	Cu	d1	d2	l	Al	Cu	Al	Cu	Al	Cu		
MP 124210	KCAB-V-16/10	16	10	5,4	4,5	67	12	6	3	2	-	-	1,6	25
MP 124211	KCAB-V-16/16		16	5,4	5,5	67	12	8	3	2	-	-	2,0	
MP 124215	KCAB-V-25/10		10	6,8	4,5	67	12	6	4	2	2	1	1,5	25
MP 124216	KCAB-V-25/16	25	16	6,8	5,5	67	12	8	4	2	2	1	1,9	
MP 124217	KCAB-V-25/25		25	6,8	7,0	67	12	10	4	2	2	1	2,4	
MP 124220	KCAB-V-35/16		16	8,0	5,5	76	14	8	4	2	2	1	2,8	25
MP 124221	KCAB-V-35/25	35	25	8,0	7,0	76	14	10	4	2	2	1	3,1	
MP 124222	KCAB-V-35/35		35	8,0	8,2	76	14	12	4	2	2	1	3,4	
MP 124225	KCAB-V-50/16		16	9,8	5,5	76	16	8	4	2	2	1	3,8	25
MP 124226	KCAB-V-50/25	50	25	9,8	7,0	76	16	10	4	2	2	1	4,1	
MP 124227	KCAB-V-50/35		35	9,8	8,2	76	16	12	4	2	2	1	4,4	
MP 124228	KCAB-V-50/50		50	9,8	10,0	83	16	14	4	3	2	1	5,0	
MP 124232	KCAB-V-70/16		16	11,2	5,5	86	18	8	4	2	2	1	7,8	25
MP 124233	KCAB-V-70/25		25	11,2	7,0	86	18	10	4	2	2	1	8,0	
MP 124234	KCAB-V-70/35	70	35	11,2	8,2	86	18	12	4	2	2	1	8,2	
MP 124235	KCAB-V-70/50		50	11,2	10,0	93	18	14	4	3	2	1	12,2	
MP 124236	KCAB-V-70/70		70	11,2	11,5	93	18	16	4	3	2	1	12,9	
MP 124240	KCAB-V-95/25		25	13,2	7,0	91	22	10	4	2	2	1	11,9	20
MP 124241	KCAB-V-95/35		35	13,2	8,2	91	22	12	4	2	2	1	12,2	
MP 124242	KCAB-V-95/50	95	50	13,2	10,0	98	22	14	4	3	2	1	13,9	
MP 124243	KCAB-V-95/70		70	13,2	11,5	98	22	16	4	3	2	1	14,1	
MP 124244	KCAB-V-95/95		95	13,2	13,5	107	22	18	4	4	2	2	15,9	
MP 124250	KCAB-V-120/25		25	14,7	7,0	91	22	10	4	2	2	1	12,7	20
MP 124251	KCAB-V-120/35		35	14,7	8,2	91	22	12	4	2	2	1	13,1	
MP 124252	KCAB-V-120/50	120	50	14,7	10,0	98	22	14	4	3	2	1	14,2	
MP 124253	KCAB-V-120/70		70	14,7	11,5	98	22	16	4	3	2	1	14,4	
MP 124254	KCAB-V-120/95		95	14,7	13,5	108	22	18	4	4	2	2	16,2	
MP 124255	KCAB-V-120/120		120	14,7	15,5	108	22	20	4	4	2	2	16,4	

Kabelske spojne čahure Al/Cu 10-35 kV

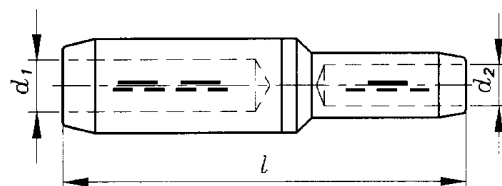
Non-tension bimetallic compression joints Al/Cu 10-35 kV

za bakrene i aluminijske vodiče prema
prema VDE 0295 i HRN N.CO.015

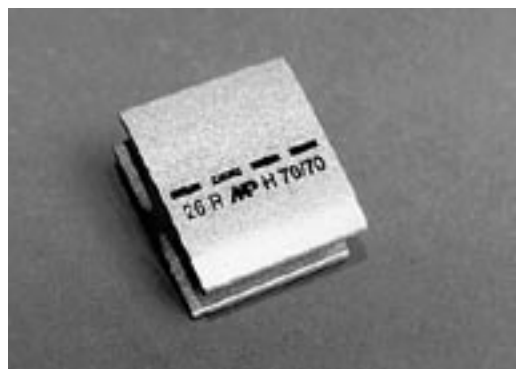
for copper and aluminium cables
acc. to VDE 0295 and HRN N.CO.015

Materijal: Aluminij
Vanjska površina: čista

Material: Aluminium
Surface: uncoated



Kataloški broj	Tip proizvoda	Nazivni presjek vodiča mm ²		Dimenzije mm			Broj alata		Broj prešanja				Težina ca. kg/100 kom.	Jedinično pakiranje kom.
		Al	Cu	d1	d2	l	Al	Cu	meh.		hydr.			
Cat.no.	Product type	Conductor cross section mm ²		Dimension mm			Die Code no.		Number of compressions				Weight appr. kg/100 pcs.	Packing Unit pcs.
		Al	Cu	d1	d2	l	Al	Cu	Al	Cu	Al	Cu		
MP 124260	KCAB-V-150/50		50	16,3	10,0	104	25	14	4	3	2	1	14,0	
MP 124261	KCAB-V-150/70		70	16,3	11,5	104	25	16	4	3	2	1	14,2	
MP 124262	KCAB-V-150/95	150	95	16,3	13,5	113	25	18	4	4	2	2	16,5	20
MP 124263	KCAB-V-150/120		120	16,3	15,5	115	25	20	4	4	2	2	16,7	
MP 124264	KCAB-V-150/150		150	16,3	17,0	115	25	22	4	4	2	2	19,5	
MP 124270	KCAB-V-185/70		70	18,3	11,5	103	28	16	5	3	2	1	18,0	
MP 124271	KCAB-V-185/95		95	18,3	13,5	113	28	18	5	4	2	2	19,1	
MP 124272	KCAB-V-185/120	185	120	18,3	15,5	115	28	20	5	4	2	2	19,6	20
MP 124273	KCAB-V-185/150		150	18,3	17,0	115	28	22	5	4	2	2	19,8	
MP 124274	KCAB-V-185/185		185	18,3	19,0	117	28	25	5	4	2	2	20,5	
MP 124280	KCAB-V-240/120		120	21,0	15,5	134	32	20	5	4	2	2	25,0	
MP 124281	KCAB-V-240/150		150	21,0	17,0	141	32	22	5	4	2	2	26,5	
MP 124282	KCAB-V-240/185	240	185	21,0	19,0	141	32	25	5	4	2	2	27,0	10
MP 124283	KCAB-V-240/240		240	21,0	21,5	143	32	32	-	-	2	2	31,5	



Odvojna stezaljka Cu H-forma

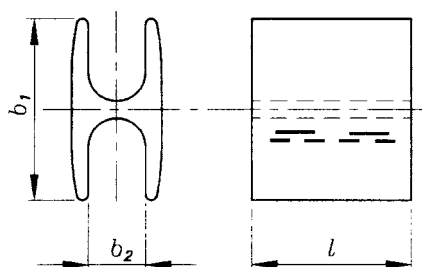
za bakrenu užad prema DIN 48201

Materijal: Bakar
Vanjska površina: čista

Copper compression Tap connectors H-Shape

for copper conductors acc. to DIN 48201

Material: Copper
Surface: uncoated



Kataloški broj	Tip proizvoda	Nazivni presjek vodiča mm ²		Dimenzije mm			Broj alata	Broj prešanja		Težina ca. kg/100 kom.	Jedinično pakiranje kom.
		Glavni	Odvojni	b1	b2	l		meh.	hydr.		
Cat.no.	Product type	Conductor cross section mm ²		Dimension mm			Die Code no.	Number of compressions		Weight appr. kg/100 pcs.	Packing Unit pcs.
		Main	Tap	b1	b2	l		mech.	hydr.		
MP141012	OSH-50/50	50	50	30,0	9,2	30,0	22 R	4	2	5,7	50
MP141014	OSH-70/70	70	70	34,0	10,8	30,0	26 R	4	2	6,5	50

T-spojnicu Cu

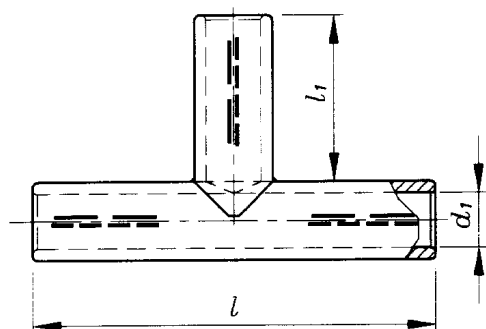
za bakrenu užad prema DIN 48201
i bakrene vodiče prema VDE 0295
i HRN N.CO.015

Materijal: Bakar
Vanjska površina: galvanski
pokositrena

T-compression cable lugs copper

for copper conductors acc. to DIN 48201
and copper cable conductors acc. to
VDE 0295 and HRN N.CO.015

Material: Copper
Surface: tin-plated



Kataloški broj	Tip proizvoda	Nazivni presjek vodiča mm ²	Dimenzije mm			Broj alata	Broj prešanja meh. hydr.		Težina ca. kg/100 kom.	Jedinično pakiranje kom.
			d1	l1	l					
<i>Cat.no.</i>	<i>Product type</i>	<i>Conductor cross section mm²</i>	<i>Dimension mm</i>			<i>Die Code no.</i>	<i>Number of compressions mech. hydr.</i>		<i>Weight appr. kg/100 pcs.</i>	<i>Packing Unit pcs.</i>
			d1	l1	l					
MP142008	TSB-25/25	25	7	23	55	10	2	1	4,50	25
MP142010	TSB-35/35	35	8,2	30	70	12	2	1	5,30	25
MP142012	TSB-50/50	50	10	34	80	14	3	1	8,40	25
MP142014	TSB-70/70	70	11,5	35	85	16	3	1	10,30	25
MP142016	TSB-95/95	95	13,5	36	90	18	4	2	14,0	25
MP142018	TSB-120/120	120	15,5	38	95	20	4	2	21,20	25
MP142020	TSB-150/150	150	17	44	110	22	4	2	28,00	25
MP142022	TSB-185/185	185	19	45	115	25	4	2	31,60	25
MP142024	TSB-240/240	240	21,5	46	120	28	-	2	36,00	25



X-spojnica Cu

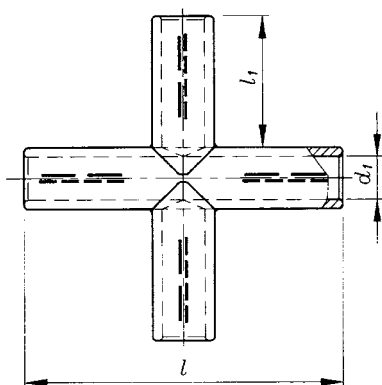
za bakrenu užad prema DIN 48201
i bakrene vodiče prema VDE 0295
i HRN N.CO.015

Materijal: Bakar
Vanjska površina: galvanski
pokositrena

X-Compression cable lugs copper

for copper conductors acc. to DIN 48201
and copper cable conductors acc. to VDE
0295 and HRN N.CO.015

Material: Copper
Surface: tin-plated



Kataloški broj	Tip proizvoda	Nazivni presjek vodiča mm ²	Dimenzije mm			Broj alata	Broj prešanja		Težina ca. kg/100 kom.	Jedinično pakiranje kom.
			d1	l1	l		meh.	hydr.		
Cat.no.	Product type	Conductor cross section mm ²	Dimension mm			Die Code no.	Number of compressions		Weight appr. kg/100 pcs.	Packing Unit pcs.
			d1	l1	l		mech.	hydr.		
MP142008	XSB-25/25	25	7	23	55	10	2	1	5,80	25
MP142010	XSB-35/35	35	8,2	30	70	12	2	1	7,20	25
MP142012	XSB-50/50	50	10	34	80	14	3	1	10,80	25
MP142014	XSB-70/70	70	11,5	35	85	16	3	1	14,10	25
MP142016	XSB-95/95	95	13,5	36	90	18	4	2	19,60	25
MP142018	XSB-120/120	120	15,5	38	95	20	4	2	28,50	25
MP142020	XSB-150/150	150	17	44	110	22	4	2	35,50	25
MP142022	XSB-185/185	185	19	45	115	25	4	2	40,00	25
MP142024	XSB-240/240	240	21,5	46	120	28	-	2	51,00	25

Prikaz poprečnih presjeka
bakrenih vodiča za
kabelske stopice i čahure
po DIN 47750, DIN 48200,
DIN 48201, DIN 57295
i VDE 0250

Allocation of cross section
for compression type cable lugs
and compression joints
for copper conductors acc. to DIN 47750,
DIN 48200, DIN 48201, DIN 57295
and VDE 0250

Broj alata	Nazivni presjeci bakrenih vodiča u mm ²					
	DIN 47750 DIN 48200 jednožični	DIN 47750 DIN 48201 višežični	DIN 47750 mногоžični	finožični	VDE 0250 super-finožični	savitljiva bakrena pletenica
Die Code no.	Allocation of cross section for copper conductors in sq.mm					
	DIN 47750 DIN 48200 single-wired	DIN 47750 DIN 48201 stranded	DIN 47750 multi-wired	fine wired	VDE 0250 superfine-wired	highly flexible braided copper
5	6	6	4-6	4		
6	10	10	6	6		
8	16	16	10	10		
10	(25)	25	16	16		
12	(35)	35	25	25	25	25
14	(50)	50	35	35	35	35
16		70	50	50	50	50
18		95	70	70	70	70
20		120	-	-	-	-
22		150	95	95	95	95
25		185	120	120	120	120
28		240	150	150	150	
32		300	185	185	185	
38		400				
42		500				
44		625				
52		800				
58		1000				

**Prikaz presjeka
alumijske užadi
po DIN 48201 i
alumijskih vodiča
po DIN 57295 i VDE 0250
za kabske stopice i čahure**

**Allocation of cross section
for compression type cable lugs
and compression joints for aluminium con-
ductors acc. to DIN 48201
and aluminium cable conductors
acc. to DIN 57295 and VDE 0250**

Broj alata	Nazivni presjeci alumijskih vodiča u mm ²			
	okrugli višežični	sektorski višežični ¹⁾	okrugli jednožični	sektorski jednožični ¹⁾
<i>Die Code no.</i>	<i>Allocation of cross section for aluminium conductors in sq.mm</i>			
	<i>round stranded</i>	<i>sector-shaped stranded ¹⁾</i>	<i>round solid</i>	<i>sector-shaped solid ¹⁾</i>
12	25	-	-	-
12	25/4	-	35	35
14	35	35	-	-
14	35/6	-	50	50
16	50	50	70	70
18	70	70	-	95
22	95	95	-	120
22	120	120	-	150
25	150	150	-	185

¹⁾Sektorske vodiče zaokružiti
potrebnim alatima

¹⁾ Sector shaped conductors must be rounded with
special dies.

Dimenzije, mehanička i električna svojstva bakrene užadi prema DIN 48201, dio 1

Measurements, mechanical and electrical volves of copper conductors acc. to DIN 48201, sheet 1

Nazivni presjek mm ²	Računski presjek mm ²	Broj žica u užetu	Promjer žice mm	Promjer užeta mm	Uzdužna masa ca.kg/km	Računska sila kidanja kN	Dozvoljena trajna struja A
<i>Rated cross section sq.mm</i>	<i>Specified cross section sq.mm</i>	<i>Number of wires</i>	<i>Wire diameter mm</i>	<i>Conductor diameter mm</i>	<i>Weight kg/km approx.</i>	<i>Computational breaking kN</i>	<i>Permanent current carrying capacity A</i>
10	10,02	7	1,35	4,1	90	4,02	90
16	15,89	7	1,70	5,1	143	6,37	125
25	24,25	7	2,10	6,3	218	9,72	160
35	34,36	7	2,50	7,5	310	13,77	200
50	49,48	7	3,00	9,0	446	19,84	250
50	48,35	19	1,80	9,0	437	19,38	250
70	65,81	19	2,10	10,5	596	26,38	310
95	93,27	19	2,50	12,5	845	37,39	380
120	116,99	19	2,80	14,0	1060	46,90	440
150	147,11	37	2,25	15,8	1337	58,98	510
185	181,62	37	2,50	17,5	1649	72,81	585
240	242,54	61	2,25	20,3	2209	97,23	700
300	299,43	61	2,50	22,5	2725	120,04	800
400	400,14	61	2,89	26,0	3640	160,42	960
500	499,83	61	3,23	29,1	4545	200,38	1110

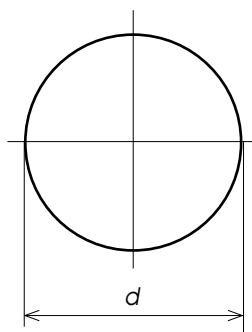
**Dimenzije, mehanička i električna svojstva
aluminijске užadi
prema DIN 48201, dio 5**

**Measurements, mechanical and
electrical volves of aluminium conductors
acc. to DIN 48201, sheet 5**

Nazivni presjek mm ²	Računski presjek mm ²	Broj žica u užetu	Promjer žice mm	Promjer užeta mm	Uzdužna masa ca.kg/km	Računska sila kidanja kN	Dozvoljena trajna struja A
<i>Rated cross section sq.mm</i>	<i>Specified cross section sq.mm</i>	<i>Number of wires</i>	<i>Wire diameter mm</i>	<i>Conductor diameter mm</i>	<i>Weight kg/km approx.</i>	<i>Computa- tional breaking kN</i>	<i>Permanent current carrying capacity A</i>
16	15,89	7	1,70	5,1	43	2,84	110
25	24,25	7	2,10	6,3	66	4,17	145
35	34,36	7	2,50	7,5	94	5,78	180
50	49,48	7	3,00	9,0	135	7,94	225
50	48,35	19	1,80	9,0	133	8,45	225
70	65,81	19	2,10	10,5	181	11,32	270
95	93,27	19	2,50	12,5	256	15,68	340
120	116,99	19	2,80	14,0	322	18,78	390
150	147,11	37	2,25	15,8	406	25,30	455
185	181,62	37	2,50	17,5	500	30,54	520
240	242,54	61	2,25	20,3	670	39,51	625
300	299,43	61	2,50	22,5	827	47,70	710
400	400,14	61	2,89	26,0	1104	60,86	855
500	499,83	61	3,23	29,1	1379	74,67	990
625	626,20	91	2,96	32,6	1732	95,25	1140
800	802,09	91	3,35	36,9	2218	118,39	1340
1000	999,71	91	3,74	41,1	2767	145,76	1540

Dimenzije okruglih aluminijskih i bakrenih vodiča po DIN 57295 i VDE 0295 A1
Okrugli jednožični vodiči (klasa 1)

Measurements of aluminium and copper round cable conductors acc. to DIN 57295 and VDE 0295 A1
Round single-wired conductors (class 1)



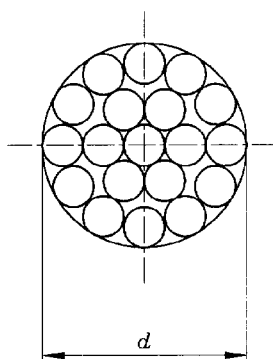
Nazivni presjek vodiča mm ²	Okrugli jednožični vodiči iz:			
	bakra		aluminija	
	d(min.) ¹⁾ mm	d(max) mm	d(min.) mm	d(max) mm
Conductor cross section mm ²	Round single-wired conductors from:			
	copper		aluminium	
	d(min.) ¹⁾ mm	d(max) mm	d(min.) mm	d(max) mm
6	-	2,9	-	-
10	-	3,7	-	-
16	-	4,6	-	-
25	-	5,7	5,2	5,7
35	-	6,7	6,1	6,7
50	-	7,8	7,2	7,8
70	-	9,4	8,7	9,4
95	-	11,0	10,3	11,0
120	-	12,4	11,6	12,4
150	-	13,8	12,9	13,8
185	-	-	14,5	15,4
240	-	-	16,7	17,6
300	-	-	18,8	19,8

¹⁾ Vrijednosti nisu definirane

¹⁾ Measures are not specified

Dimenzije okruglih aluminijskih i bakrenih vodiča prema DIN 57295 i VDE 0295 A1
Okrugli višezični vodiči
(klasa 2)

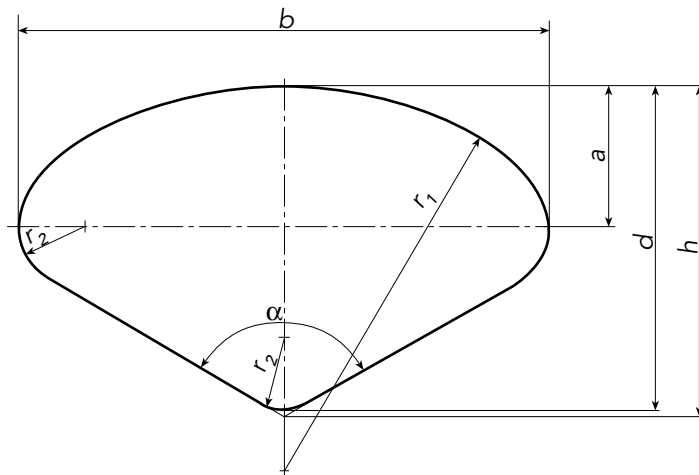
Measurements of aluminium and copper round cable conductors acc. to DIN 57295 and VDE 0295 A1
Round multiple-wired conductors
(class 2)



Nazivni presjek vodiča mm ²	Okrugli višezični vodiči iz:				
	nekompaktni d mm	bakra kompaktni mm ² d(min.) mm		aluminija kompaktni d(min.) mm	
<i>Conductor cross section</i> mm ²	<i>uncompact</i> d mm	<i>Round multiple-wired conductors from:</i>			
		<i>copper</i> <i>compact</i> d(max) mm		<i>aluminium</i> <i>compact</i> d(max) mm	
6	3,3	-	-	-	-
10	4,2	-	-	-	-
16	5,3	-	-	-	-
25	6,6	5,6	6,5	5,6	6,5
35	7,9	6,6	7,5	6,6	7,5
50	9,1	7,7	8,6	7,7	8,6
70	11,0	9,3	10,2	9,3	10,2
95	12,9	11,0	12,0	11,0	12,0
120	14,5	12,5	13,5	12,5	13,5
150	16,2	13,9	15,0	13,9	15,0
185	18,0	15,5	16,8	15,5	16,8
240	20,6	17,8	19,2	17,8	19,2
300	23,1	20,0	21,6	20,0	21,6
400	26,1	22,9	24,6	22,9	24,6
500	29,2	25,7	27,6	25,7	27,6

**Dimenzije aluminijских sektorskih vodiča
prema DIN 57295 i VDE 0295 A1
Sektorski jednožični vodiči
(klasa 1)**

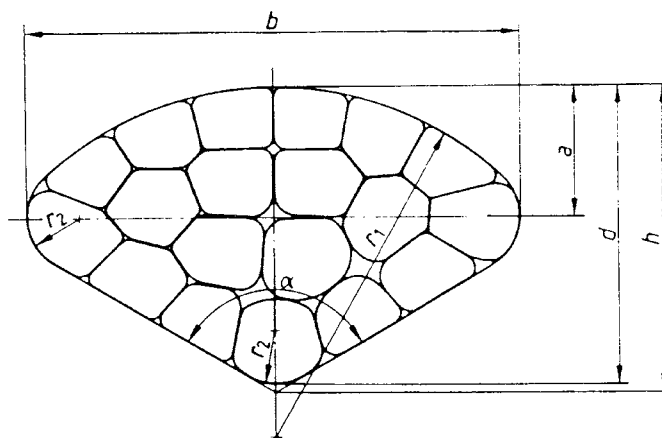
**Measurements of aluminium sector
cable conductors acc. to
DIN 57295 and VDE 0295 A1
Sector single-wired conductors
(class 1)**



Nazivni presjek vodiča mm ²	Približna vrijednost	Nazivna vrijednost	Dozvoljeno odstupanje	Nazivna vrijednost	Dozvoljeno odstupanje	Približna vrijednost	Približna vrijednost	Približna vrijednost
Conductor cross section mm ²	Appr. value h mm	Term value d mm	Tolerable deviation	Term. value b mm	Tolerable deviation	Appr. value r1 mm	Appr. value r2 mm	Appr. value a mm
Bazni kut $\alpha = 120^\circ$ Basic angle $\alpha = 120^\circ$								
50	6,5	6,2	±0,5	9,8	±0,6	8,1	1,8	2,6
70	8,1	7,7	±0,5	10,9	±0,6	9,8	2,8	3,3
95	9,3	8,9	±0,5	13,5	±0,6	11,2	2,8	3,8
120	10,5	10,0	±0,6	15,5	±0,6	12,3	3,0	4,3
150	11,5	11,0	±0,6	17,5	±0,6	13,6	3,0	4,7
185	12,8	12,3	±0,6	20,1	±0,7	15,1	3,0	5,3
240	14,5	14,0	±0,6	23,4	±0,7	17,0	3,0	6,0
Bazni kut $\alpha = 90^\circ$ Basic angle $\alpha = 90^\circ$								
50	7,6	6,9	±0,5	9,1	±0,5	9,6	1,8	2,3
70	9,5	8,3	±0,5	10,4	±0,6	11,5	2,8	3,1
95	10,9	9,7	±0,5	12,7	±0,6	13,3	2,8	3,4
120	12,3	11,1	±0,6	14,5	±0,6	14,5	3,0	3,8
150	13,4	12,2	±0,6	16,2	±0,6	15,9	3,0	4,1
185	15,0	13,8	±0,6	18,7	±0,6	17,8	3,0	4,4
240	17,0	15,8	±0,6	21,9	±0,6	20,1	3,0	4,9

**Dimenzije aluminijских sektorskih vodiča
prema DIN 57295 i VDE 0295 A1
Sektorski višezični vodiči
(klasa 2)**

**Measurements of aluminium sector
cable conductors acc. to
DIN 57295 and VDE 0295 A1
Sector multiple-wired conductors
(class 2)**



Nazivni presjek vodiča mm ²	Približna vrijednost	Nazivna vrijednost	Dozvoljeno odstupanje	Nazivna vrijednost	Približna vrijednost	Približna vrijednost	Približna vrijednost
<i>Conductor cross section mm²</i>	<i>Appr. value h mm</i>	<i>Term value d mm</i>	<i>Tolerable deviation</i>	<i>Term value b mm</i>	<i>Appr. value r1 mm</i>	<i>Appr. value r2 mm</i>	<i>Appr. value a mm</i>
Bazni kut $\alpha = 120^\circ$ Basic angle $\alpha = 120^\circ$							
35*	6,1	5,9	±0,7	9,5	7,5	1,5	2,5
50	7,1	6,8	±0,7	10,9	8,7	1,8	2,9
70	8,6	8,2	±0,7	13,1	10,3	2,3	3,5
95	10,0	9,6	±0,7	15,6	12,0	2,4	4,1
120	11,2	10,8	±0,8	17,7	13,0	2,4	4,7
150	12,6	12,2	±0,8	20,3	14,6	2,5	5,3
185	14,0	13,6	±0,8	23,1	16,0	2,5	5,9
240	16,0	15,6	±0,8	26,7	18,2	2,6	6,8
300	17,8	17,4	±0,8	29,5	20,5	2,9	7,6
400	20,5	20,1	±0,9	34,4	22,8	2,9	8,9
Bazni kut $\alpha = 90^\circ$ Basic angle $\alpha = 90^\circ$							
35*	7,2	6,5	±0,7	8,9	9,0	1,6	2,1
50	8,3	7,6	±0,7	10,4	10,3	1,7	2,4
70	10,0	9,0	±0,7	12,1	12,3	2,3	3,0
95	11,7	10,7	±0,8	14,7	14,1	2,3	3,4
120	13,2	12,1	±0,8	16,4	15,5	2,7	3,9
150	14,6	13,5	±0,8	18,4	17,2	2,7	4,3
185	16,2	15,1	±0,8	20,8	19,0	2,7	4,7
240	18,6	17,4	±0,8	24,3	21,6	2,8	5,3
300	20,6	19,4	±0,8	27,3	24,0	2,8	5,8
400	24,0	22,8	±0,9	33,1	26,7	2,8	6,8

* samo za bakrene vodiče

* only for copper conductors

Dimenzije okruglih aluminjskih
i bakrenih vodiča prema
HRN N.CO.015
Okrugli jednožični vodiči
(klasa 1)

Measurements of aluminium
and copper round cable conductors
acc. to HRN N.CO.015
Round single-wired conductors
(class 1)

Nazivni presjek vodiča mm ²	Okrugli jednožični vodiči iz:		
	bakra ∅ mm	aluminija ∅(min.) mm	∅(max) mm
<i>Conductor cross section mm²</i>	<i>Round single-wired conductors from: copper</i>	<i>aluminium</i>	
	∅ mm	∅(min.) mm	∅(max) mm
6	2,9	-	-
10	3,7	-	-
16	4,6	4,1	4,6
25	5,7	5,2	5,7
35	6,7	6,1	6,7
50	7,8	7,2	7,8
70	9,4	8,7	9,4
95	11,0	10,3	11,0
120	12,4	11,6	12,4
150	13,8	12,9	13,8
185	-	14,5	16,4
240	-	16,7	17,6
300	-	18,8	19,8

Dimenzije okruglih aluminijskih
i bakrenih vodiča prema
HRN N.CO.015
Okrugli višežični vodiči
(klasa 2)

Measurements of aluminium
and copper round cable conductors
acc. to HRN N.CO.015
Round multiple-wired conductors
(class 2)

Nazivni presjek vodiča mm ²	Okrugli višežični vodiči iz:		
	bakra ∅ mm	aluminija ∅(min.) mm	∅(max) mm
<i>Conductor cross section mm²</i>	<i>Round multiple-wired conductors from:</i>		
	<i>copper</i> ∅ mm	<i>aluminium</i> ∅(min.) mm	∅(max) mm
6	3,3	-	-
10	4,2	-	-
16	5,3	4,6	5,2
25	6,6	5,6	6,5
35	7,9	6,6	7,5
50	9,1	7,7	8,6
70	11,0	9,3	10,2
95	12,9	11,0	12,0
120	14,5	12,5	13,5
150	16,2	13,9	15,0
185	18,0	15,5	16,8
240	20,6	17,8	19,2
300	23,1	20,0	21,6
400	26,1	22,9	24,6
500	29,2	25,7	27,6

Momenti pritezanja vijaka u Nm

Permissible Torque in Nm

Vijak ¹⁾ Thread ¹⁾	Otvor ključa Key mm	K l a s e č v r s t o ć e v i j a k a C l a s s - s t r e n g h t f o r b o l t s				
		5,6 5,8	8,8	A2/A4 F60	A2/A4 F80	Bronca F60
M6	10	5,0	9,0	8,5	9,0	7,7
(M7)	11	-	15,0	-	-	13,0
M8	13	10,0	22,0	20,0	22,0	19,0
M10	17	19,0	44,0	38,0	44,0	37,0
M12	19	33,0	-	65,0	75,0	64,0
(M14)	22	52,0	-	95,0	120,0	100,0
M16	24	80,0	-	130,0	185,0	-

¹⁾ Ujedno vanjski promijer tijela vijka u mm

¹⁾ Same as outer bolt diameter in mm

Pretvorba angloameričkih mjernih jedinica u metričke i obrnuto

Conversion of English/American Technical Measures into Metric Measures and Vice Versa

a) Jedinice za duljinu

1 mil	= 0,0254 mm
1 inch	= 25,4 mm
1 foot	= 0,3048 mm
1 yord	= 0,914 m
1 mile	= 1,609 km

a) Linear Measures

1 mm	= 39 mils
1 mm	= 0,039 inches (Zoll)
1 m	= 3,281 feet
1 m	= 1,084 yards
1 km	= 0,621 miles

b) Jedinice za površinu

1 sq. inch	= 645,16 mm ²
1 sq. foot	= 0,0929 m ²
1 sq. yard	= 0,8361 m ²
1 acre	= 0,4047 ha
1 sq. m	= 2,59 km ²

b) Square Measures

1mm ²	= 0,00155 sq.in.
1 m ²	= 10,765 sq.ft.
1 m ²	= 1,196 sq.yd.

c) Jedinica za masu

1 grain	= 0,059 g
1 ounce	= 28,349 g
1 pound (lb)	= 0,454 kg
1 Eng.ton	= 1,016 t
1 Americ.ton	= 0,907 t

c) Measures of mass

1 g	= 16,96 grains (gr)
1 g	= 0,0353 ounces (oz)
1 kg	= 2,205 pounds (lbs)
1 kg	= 35,274 ounces (oz)

d) Jedinice za spec.otpor

1 mickro ohm-inch	= 0,0254 x 10 ⁻⁶ Ωm
1 Ohm-mil/ft.	= 1,662 x 10 ⁻³ Ωmm ² /m

d) Specific resistance Measures

1 Ωmm ² /m	= 6017 Ωm mil/ft
1 Ωm	= 3,937 μΩin